

COACHMAN®

collection

4-LAYER CONSTRUCTION



America's Favorite Garage Doors®



*Model CGU/CG/CD12 with ARCH3 Windows.
Shown with Sandtone Steel Base and White Composite Overlays;
Standard Spade Handles and Step Plates.*



clopay.com

Model CGU/CG/CD11 with S024 Windows.
Shown with White Steel Base and
White Composite Overlays;
Standard Spade Handles and Step Plates.

the look of WOOD the ease of STEEL®

Colors

STEEL BASE DOOR COLORS



White Almond Desert Tan Sandtone

COMPOSITE OVERLAY COLORS



White Almond Desert Tan Sandtone

Due to the printing process, colors may vary.

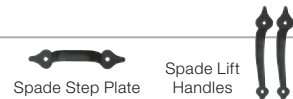
- Composite overlays and steel base are available in White, Almond, Desert Tan and Sandtone. Overlay and steel base colors can be mixed to achieve desired look.
- Coachman® Collection doors can be painted using a high-quality exterior latex paint.

IMPORTANT: When painting your door, we require use of either a pre-approved paint or paints having an LRV (Light Reflective Value) of 38 or higher. Use of other paints will void the door's warranty.

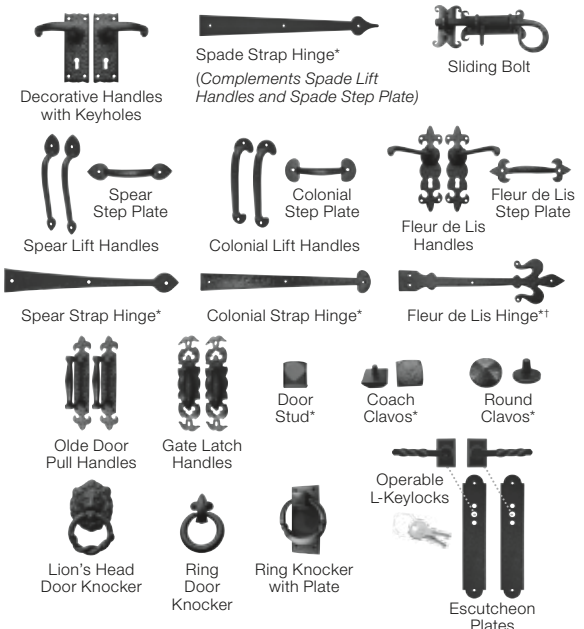
A list of pre-approved paints can be found at <http://info.garagedoors.com/lrv>

Decorative Hardware

STANDARD



OPTIONAL



*Door may not open properly if installed near the top depending on opening dimensions and lift type. See your Clopay Dealer for more details.
†Hardware may not fit on all door designs. See your Clopay Dealer for more details.

COACHMAN® collection

The Coachman® Collection gives your home classic elegance while complementing your home's architectural style. With four distinctive series, the Coachman Collection offers the sophisticated expression of a carriage house door with the science of durable steel and composite construction. It's the perfect blend of beauty and practicality—masterful in the details and innovative in design—and it's only from Clopay®.

4-Layer Construction

intellcore®
insulation technology

Warmer. Quieter. Stronger.

Coachman Collection® doors featuring Intellcore® insulation technology represent the ultimate smart choice for homeowners. Clopay's Intellcore is a proprietary polyurethane foam that is injected into a garage door, expanding to fill the entire structure. The result is a door with incredible strength and durability. Its dense insulation also produces a quieter door, while its industry-leading 18.4 R-value provides year-round comfort and improved energy efficiency. Smart, indeed.



Composite overlay with beveled coped edge and center groove creates a detailed carriage house look.



CGU MODELS

2"

POLYURETHANE
INSULATION

EFFICIENCY
18.4
R-VALUE

CG MODELS

2"

POLYSTYRENE
INSULATION

EFFICIENCY
9.0
R-VALUE

CD MODELS

1³/₈"

POLYSTYRENE
INSULATION

EFFICIENCY
6.5
R-VALUE

Calculated door section R-value is in accordance with DASMA TDS-163.

Model CGU/CG/CD13 with REC14 Windows,
Shown with White Steel Base and White Composite Overlays;
Standard Spade Handles and Step Plates.



Series ONE

SERIES ONE of the Coachman® Collection proves that in simplicity, there is sophistication. Architectural home designs such as Mission, Shaker, Country and Prairie look beautiful with the understated elegance of this classic look. Your choice of rectangular, square, arched windows or a solid top section provides that finishing touch.

SERIES ONE DESIGNS

	TOP11 (Solid)	TOP12 (Solid)	TOP13 (Solid)	ARCH1 (Solid)	ARCH1 Window	ARCH3 Window	ARCH4 Window	SQ23 Window	SQ24 Window	REC11 Window	REC13 Window	REC14 Window
CGU CG CD 11												
	TOP11 (Solid)	TOP12 (Solid)	TOP13 (Solid)	ARCH1 (Solid)	ARCH1 Window	ARCH3 Window	ARCH4 Window	SQ23 Window	SQ24 Window	REC11 Window	REC13 Window	REC14 Window
CGU CG CD 12												
	TOP11 (Solid)	TOP12 (Solid)	TOP13 (Solid)	ARCH1 (Solid)	ARCH1 Window	ARCH3 Window	ARCH4 Window	SQ23 Window	SQ24 Window	REC11 Window	REC13 Window	REC14 Window
CGU CG CD 13												

9' wide x 7' high; shown with Sandtone base and White overlays. Consult your Clopay Dealer or clopay.com for additional sizes.

Model CGU/CG/CD21 with ARCH3 Windows.
Shown with White Steel Base and White Composite Overlays;
Standard Spade Handles and Step Plates.

Series TWO

SERIES TWO of the Coachman® Collection complements homes with American Country flair. With full or half crossback panels and your choice of rectangular, square or arched window styles, it's a classic style that looks as good with Irish Country Pine as it does with Texas Hill Country Chic.

SERIES TWO DESIGNS

	TOP11 (Solid)	TOP12 (Solid)	TOP13 (Solid)	ARCH1 (Solid)	ARCH1 Window	ARCH3 Window	ARCH4 Window	SQ23 Window	SQ24 Window	REC11 Window	REC13 Window	REC14 Window
CGU CG CD 21												
	TOP11 (Solid)	TOP12 (Solid)	TOP13 (Solid)	ARCH1 (Solid)	ARCH1 Window	ARCH3 Window	ARCH4 Window	SQ23 Window	SQ24 Window	REC11 Window	REC13 Window	REC14 Window
CGU CG CD 22												
	TOP11 (Solid)	TOP12 (Solid)	TOP13 (Solid)	ARCH1 (Solid)	ARCH1 Window	ARCH3 Window	ARCH4 Window	SQ23 Window	SQ24 Window	REC11 Window	REC13 Window	REC14 Window
CGU CG CD 23												

9' wide x 7' high; shown with Sandtone base and White overlays. Consult your Clopay Dealer or clopay.com for additional sizes.



*Model CGU/CG/CD31 with ARCH1 (Solid) Top Section.
Shown with Sandtone Steel Base and White Composite Overlays;
Optional Fleur de Lis Handles and Step Plates.*

Series THREE

SERIES THREE of the Coachman® Collection delivers solid good looks and is designed to work exceptionally well with today's country French and Victorian style homes. Fully enclosed to provide maximum privacy, with optional crossbuck bottom panels and square or arched top sections, this series is the architect's choice for a variety of home styles.

SERIES THREE DESIGNS

CGU CG CD 31	TOP11 (Solid)	ARCH1 (Solid)	CGU CG CD 32	TOP12 (Solid)	ARCH1 (Solid)	CGU CG CD 33	TOP13 (Solid)	ARCH1 (Solid)
CGU CG CD 34	TOP11 (Solid)	ARCH1 (Solid)	CGU CG CD 35	TOP11 (Solid)	ARCH1 (Solid)	CGU CG CD 36	TOP11 (Solid)	ARCH1 (Solid)

9' wide x 7' high; shown with Sandtone base and White overlays. Consult your Clopay Dealer or clopay.com for additional sizes.

Model CGU/CG/CD42 with TOP12 (Solid) Top Section.
Shown with Desert Tan Steel Base and Sandtone Composite Overlays;
Optional L-Keylocks with Escutcheon Plates and
Standard Spade Step Plates.

Series FOUR

SERIES FOUR of the Coachman® Collection is designed specifically for a cleaner, more contemporary look. Clean, simplistic and aesthetically pleasing designs without horizontal lines allow the garage to blend well with surrounding architecture while still retaining the hallmark carriage house appearance unique to Coachman Collection doors.

SERIES FOUR DESIGNS

TOP11 (Solid)		ARCH1 (Solid)		TOP12 (Solid)		ARCH1 (Solid)		TOP13 (Solid)		ARCH1 (Solid)	
CGU				CGU				CGU			
CG				CG				CG			
CD				CD				CD			
41				42				43			

9' wide x 7' high; shown with Sandtone base and White overlays. Consult your Clopay Dealer or clopay.com for additional sizes.

Additional Sizes & Windows

Shown at right are common width configurations using 7' high Model CGU/CG/CD12 with ARCH4 windows as an example.

Shown below are additional window/top section options for double car doors.



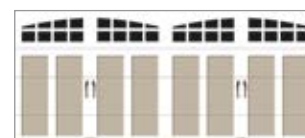
8', 9' Wide Doors



10' Wide Doors



12' Wide Doors



15', 15'6", 16', 18' Wide Doors



ARC1A (Solid); Series 1 and 2 Only



ARC3A Window; Series 1 and 2 Only



ARC1A (Solid); Series 3 and 4 Only



ARC1A (Solid); Series 3 and 4 Only



ARC1A Window; Series 1 and 2 Only



ARC4A Window; Series 1 and 2 Only



ARC1A (Solid); Series 3 and 4 Only

To visualize on your home, go to www.clopaydoor.com/DIS/garage-door-imagination-system.aspx

Additional Features

- Standard doors available in 4 carriage house design series and 15 different models. Custom designs and sizes also available. See your Clopay® Dealer for details.
- Woodgrain embossed insulated galvanized steel base door painted front and back for a virtually maintenance-free door. See *Colors*.
- Windows with complete overlay and true arch designs are available in double strength or obscure glass. Models CGU/CG also available with insulated glass.
- Patented clip-in window grilles are removable for easy cleaning.
- Available with 2" Intellicore® polyurethane (R-value 18.4), 2" polystyrene (R-value 9.0) or 1-3/8" polystyrene (R-value 6.5) insulation and thermal break.
- Heavy-duty 14 gauge steel hinges for long-lasting performance.
- High-cycle nylon rollers for quiet operation.
- Rust-proof, aluminum-bottom weatherseal retainer with removable astragal.
- WINDCODE®: 1-3/8" CD Models are available up through single car W5 WINDCODE and 2" CG Models are available in W5 (double car)/W6/W8 WINDCODE. Some restrictions apply. See your Clopay Dealer for details.

Warranties



A FOCUS ON

green



Clopay is committed to designing, manufacturing and distributing garage doors that enhance the beauty, safety and value of your home while minimizing the impact on the environment.

The Coachman® Collection helps conserve natural resources by providing a durable, reliable, low-maintenance, energy efficient door with environmentally safe insulation. Steel doors and hardware are impervious to moisture and will not rot, warp, crack or fade, and the steel used in Clopay's doors is made from over 75% recycled content. All Clopay doors are made in the U.S., minimizing shipping, damage and handling.

For more details on Clopay's green practices visit clopaydoor.com/green.aspx

Size Availability

Some width and height restrictions. See your Clopay Dealer for details.

AVAILABLE DOOR HEIGHTS

Series 1, 3 & 4	Series 2 – Design 21	Series 2 – Designs 22 & 23
6'0" to 16'0" in 3" increments	6'0" to 8'0" in 3" increments and 8'6", 9'0", 9'6", 10'0"	6'0" to 10'0" in 3" increments

AVAILABLE DOOR WIDTHS

	Designs 11, 12, 13, 31, 32, 33, 36, 41, 42, 43	Design 21	Designs 22 & 23	Designs 34 & 35
Model CD	6'2", 6'4", 7'0", 7'2", 7'6", 7'8", 8'0", 8'2", 8'6", 9'0", 9'2", 10'0", 12'0", 12'2", 13'0", 13'8", 14'0", 14'2", 15'0", 15'2", 15'6", 15'8", 16'0", 16'2", 17'0", 18'0", 18'2"	6'2", 6'4", 7'0", 7'2", 7'6", 7'8", 8'0", 8'2", 8'6", 9'0", 9'2", 10'0", 12'0", 12'2", 13'0", 13'8", 14'0", 14'2", 15'0", 15'2", 15'6", 15'8", 16'0", 16'2", 17'0", 18'0", 18'2"	6'2", 6'4", 7'0", 7'2", 7'6", 7'8", 8'0", 8'2", 8'6", 9'0", 9'2", 10'0", 14'0", 14'2", 15'0", 15'2", 15'6", 15'8", 16'0", 16'2", 17'0", 18'0", 18'2"	6'2", 6'4", 7'0", 7'2", 7'6", 7'8", 8'0", 8'2", 8'6", 9'0", 9'2", 10'0", 14'0", 14'2", 15'0", 15'2", 15'6", 15'8", 16'0", 16'2", 17'0", 18'0", 18'2"
Models CG & CGU	6'2", 6'4", 7'0", 7'2", 7'6", 7'8", 8'0", 8'2", 8'6", 9'0", 9'2", 10'0", 12'0", 12'2", 13'0", 13'8", 14'0", 14'2", 15'0", 15'2", 15'6", 15'8", 16'0", 16'2", 17'0", 18'0", 18'2", 19'0", 20'0"	6'2", 6'4", 7'0", 7'2", 7'6", 7'8", 8'0", 8'2", 8'6", 9'0", 9'2", 10'0", 12'0", 12'2", 13'0", 13'8", 14'0", 14'2", 15'0", 15'2", 15'6", 15'8", 16'0", 16'2", 17'0", 18'0", 18'2", 19'0", 20'0"	6'2", 6'4", 7'0", 7'2", 7'6", 7'8", 8'0", 8'2", 8'6", 9'0", 9'2", 10'0", 14'0", 14'2", 15'0", 15'2", 15'6", 15'8", 16'0", 16'2", 17'0", 18'0", 18'2", 19'0"	6'2", 6'4", 7'0", 7'2", 7'6", 7'8", 8'0", 8'2", 8'6", 9'0", 9'2", 10'0", 14'0", 14'2", 15'0", 15'2", 15'6", 15'8", 16'0", 16'2", 17'0", 18'0", 18'2", 19'0"



For more detailed product specification information or availability of our Coachman® Collection Garage Doors, please contact your Clopay Dealer. To locate a dealer to help you select the right door for your home, just go to www.clopaydoor.com/dealer or call 1-800-2CLOPAY (225-6729).

Follow us on       



©2013 Clopay Building Products Company, Inc., a Griffon company.

RSR-DCOACHSS-12_REV1013